

L.B. Foster Supplies Steel Pile System for Combi-Wall Construction

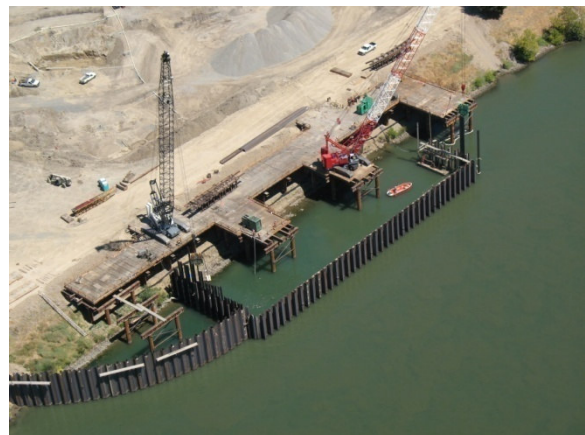
L.B. Foster recently provided steel piling to the Freeport Regional Water Authority (a joint venture of the Sacramento County Water Agency and the East Bay Municipal Utility District) for a project on the Sacramento River in California. When completed, a new water intake and pumping station will supply water from the Sacramento River to customers in Sacramento County and the East Bay. A Combi-Wall structure was built to provide support for this new station. Various types of piles were utilized on this project from several strategic supply partners of L.B. Foster – 3,200 tons of various types of steel sheet piles (PZC™-13, PZC™-18 and PZC™-26) produced by supplier Gerdau Ameristeel and PSp 1017 Beams from supplier Peiner. PilePro Connectors were also used on the project, from PilePro. L.B. Foster also worked closely with local contractor Balfour Beatty during this project.



Steel sheet pile being driven for Combi-Wall

Combi-Walls & PZC Sheet Pile

L.B. Foster Combi-Walls are an efficient way to achieve high section modulus for those structures which require strength which exceeds that available from traditional sheet pile sections. By utilizing King Piles, typically of Wide Flange, Pipe Pile or Peiner Beams, in conjunction with steel sheet pile and extruded connectors to connect these, the contractor can achieve an efficient cost effective system. The King Pile will be driven to a depth necessary to achieve the required passive toe resistance then steel sheet pile can be supplied in shorter lengths to act simply as a barrier for the soils or grade separation that is being constructed. This shorter sheets result in an overall reduction in steel required as well as less driving time. L.B. Foster utilizes the "Wider, Lighter, Stronger" PZC sections produced by Gerdau Ameristeel which enable wider spacing of the King Pile due to the laying width of the efficient PZC sections, therefore requiring less installation time.



Combi-Wall will support new pumping station

(PZC™ is a registered trademark of Gerdau Ameristeel)